

# SERVOMECH - HS SERIES HIGH SPEED SCREW JACK

HS25  
Holesaw 25mm

- 10 kN to 200 kN force
- Up to 100% duty cycle for continuous operation
- Motor mounts for IEC or servo units
- Options including encoder, protective bellows, safety nut.
- Food industry lubrication options

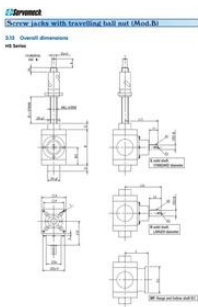


## Product description

Long life synthetic oil lubricated bevel gear GLEASON spiral tooth system. High efficiency and low noise functioning Bevel gear ratio from 1:1 to 1:4 Angular backlash on output shaft max 10' (available on request reduced backlash) Input speed up to 3.000 rpm Ball screw drive, travelling nut (Model B) Available accessories: Incremental or absolute encoder for positioning control Prepared for IEC standard motors, AC or DC motors, and brushless servomotors (special motor flange adapter available upon request) Protective bellows Safety nut More option upon request: Lubricants for high or low ambient temperature Lubricants suitable for food industry NB. Due to the technical nature of these product, detailed application information is required before any quotation can be offered.

## Specifications

<b>Duty cycle</b>	100
<b>Traction Max</b>	25000



Screw jacks with travelling ball nut (Mod.B)					
Overall dimensions					
Mod.	HS 10	HS 25	HS 50	HS 100	HS 200
Weight (kg)	10	25	50	100	200
Max. force (kN)	10	25	50	100	200
Max. speed (rpm)	3000	3000	3000	3000	3000
Max. input speed (rpm)	3000	3000	3000	3000	3000
Max. torque (Nm)	10	25	50	100	200
Max. length (mm)	100	200	400	800	1600
Max. diameter (mm)	10	25	50	100	200
Max. hole diameter (mm)	10	25	50	100	200
Max. hole depth (mm)	10	25	50	100	200
Max. hole diameter (mm) (with ball nut)	10	25	50	100	200
Max. hole depth (mm) (with ball nut)	10	25	50	100	200
Max. hole diameter (mm) (with ball nut and encoder)	10	25	50	100	200
Max. hole depth (mm) (with ball nut and encoder)	10	25	50	100	200

NOTE: For total ball dimensions, see the "Ball nut dimensions" on page 10.