

## HONSBERG - VHS SERIES FLOW METER

### Spindle (screw)

VHS025GAO0140B

Flow sensor, PNP, 1.4 - 140l/min, G1"

- For oil and lubricating liquids up to 40,000 cSt
- For high flows up to 2500 l/min
- Up to 350 bar pressure
- Light and compact design



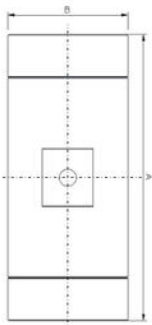
#### Product description

Model VHS is a screw flow sensor designed especially for applications with viscose media and high flows. Has high accuracy regardless of viscosity up to 40,000 cSt and maintains a low sound level under 50dB during operation. All mounting positions are possible and the direction of flow is independent of mounting position.

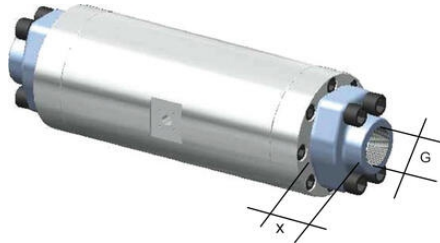
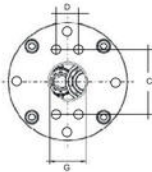
#### Specifications

<b>Accuracy</b>	± 1% of the measurement value (at 20 cSt)
<b>Connection</b>	Internal thread, G 1 "
<b>Electrical Connection</b>	Plug connector DIN 43650-A
<b>Flow Max l/min Double</b>	200
<b>Flow Range Max</b>	140
<b>Flow Range Min</b>	1,4
<b>Function</b>	Screw
<b>IP Class</b>	IP67
<b>Output</b>	PNP / NPN frequency
<b>Power Consumption</b>	19
<b>Pressure drop</b>	About 3 bars at 100 cSt
<b>Pressure Range Max</b>	160
<b>Repeatability</b>	0,25
<b>Temperature range of media from</b>	-25

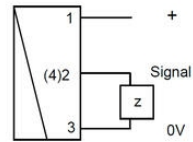
Temperature range of media to	80
Weight	3,44
Viscosity Max	40000
Voltage DC max	30
Voltage DC min	10



G"	A mm	B mm	C mm	D mm	X mm	Screw
1"	220	88	57,1	27,8	44	6xM8
1 1/4"	270	100	66,7	31,6	44	8xM8
1 1/2"	320	115	79,4	36,5	51	8xM10
1 3/4"	340	135	79,4	36,5	51	8xM12
2"	400	160	96,8	44,4	70	8xM14
2 1/4"	430	180	96,8	44,4	70	8xM16
2 1/2"	478	210	123,8	58,7	75	6xM20

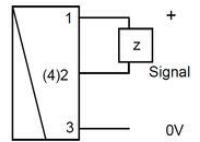


Push pull to PNP



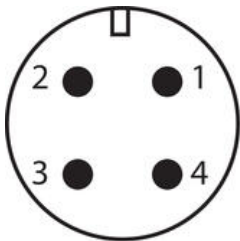
z = load

Push pull to NPN



1 +10..30 V DC  
2 utsignal  
4 0 V

PNP/NPN (DIN 43650-A)



1 +10..30 V DC  
3 0 V  
4 utsignal

4-20 mA (M12x1-kontakt)