

HONSBERG - LABO XF SERIES FLOW METER

Dynamic diaphragm (flap)

XF-008GMI015

Flow sensor 1/4", 1-15 l/min, 4-20mA

- For liquids up to 16 bar
- Flow from 1 l/min. to 80 l/min.
- Connection from 1/4" to 3/4"
- Housing in PPS or stainless



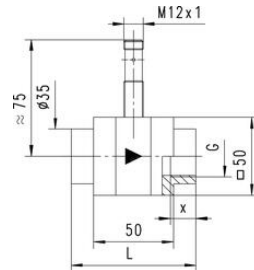
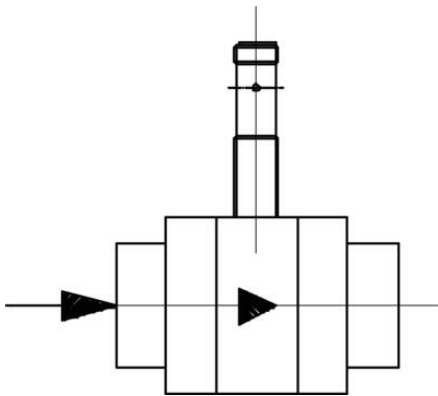
Product description

Model XF is a compact flow sensor in PPS plastic or stainless for water applications. Measurement takes place via a spring mounted metal plate which gives a rapid response time, low pressure drop, and high accuracy. The design with no moving parts makes it suitable for applications where this is a requirement. XF can be simply combined with Honsberg's Omni- or Flex technology.

Specifications

Accuracy	± 3% of the measured value, but at least 0.25 l / min
Connection	Internal thread G ¼ "
Electrical Connection	Plug M12x1, 4-pole
Flow Max l/min Double	120
Flow Range Max	15
Flow Range Min	1
Function	Dynamic membrane
IP Class	IP67
Load Max	100
Output	4-20 mA
Power Consumption	20
Pressure drop	Approximately 0.5 bar at maximum flow
Pressure Range Max	16
Temperature range of media from	0

Temperature range of media to	70
Weight	0,35
Viscosity Max	1
Voltage DC max	30
Voltage DC min	10



G"	L mm	X mm	Weight kg
1/4	74	12	0,60
3/8	74	12	0,60
1/2	78	14	0,60
3/4	82	16	0,65
1	82		0,70

