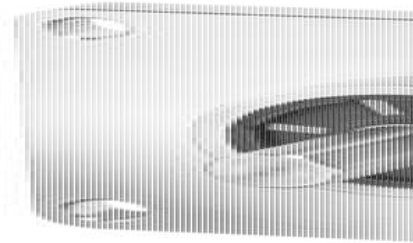


KUEBLER - INCREMENTAL PULSE TRANSDUCER, STAINLESS STEEL, SENDIX 5006/5026

SERIE 5006

- Housing diameter Ø58 mm
- stainless steel housing
- Axle seal in Viton® from DuPont ©
- Temperature range -40 to +85 ° C



Product description

Sendix 5006/5026 is a robust incremental shaft sensor specially designed for industrial use outdoors or in the food industry. The shaft seal is in Viton® material from DuPont. Viton® is specially designed to cope with chemical impact. With its powerful housing, the sensor is more protected from impact and impact than previous models in the 58XX series. With the new Safety-Lock™ construction, the bearings in the angle sensor have been placed with a larger line spacing and a special locking latch that prevents stock displacement in any direction.

The sensor comes with shaft and hole shaft, in combination with several different flanges to fit where 58mm sensors have previously been sitting.

Please refer to the images below for ordering information.

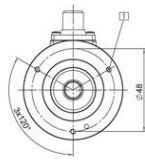
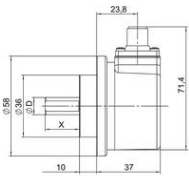
Order code Shaft version	8.5006 Type	. X X X 4 . a b c d	. XXXX e
a Flange	7 = clamping flange ø 58 mm [2.28"] A = synchro flange ø 58 mm [2.28"] C = square flange □ 63.5 mm [2.5"]	c Output circuit / power supply	<i>Optional on request</i> - other pulse rates - Ex 2/22 - seawater resistant (stainless steel V4A)
b Shaft (ø x L), with flat	1 = ø 6 x 10 mm [0.24 x 0.39"] 3 = ø 10 x 20 mm [0.39 x 0.79"] 8 = ø 3/8" x 7/8"	d Type of connection	<i>Stainless steel V4A as standard types (deliverable as from 1 unit)</i>
		4 = radial M12 connector, 8-pin	V4A 1.4404 8.5006.73X4.XXXX-V4A
		e Pulse rate	
		1, 5, 10, 12, 36, 100, 200, 250, 256, 360, 400, 500, 512, 600, 800, 1000, 1024, 1200, 2000, 2048, 2500, 3600, 4096, 5000 (e.g. 100 pulses => 0100)	

Order code Hollow shaft	8.5026 Type	. X X X 2 . a b c d	. XXXX e
a Flange	1 = with spring element, long C = with stator coupling, ø 63 mm	c Output circuit / power supply	<i>Optional on request</i> - other pulse rates - Ex 2/22 - seawater resistant (stainless steel V4A)
b Through hollow shaft	2 = ø 1/4" 4 = ø 3/8" 3 = ø 10 mm [0.39"] 5 = ø 12 mm [0.47"] 6 = ø 1/2" 8 = ø 15 mm [0.59"]	d Type of connection	<i>Stainless steel V4A as standard types (deliverable as from 1 unit)</i>
		2 = radial M12 connector, 8-pin	V4A 1.4404 8.5026.18X2.XXXX-V4A
		e Pulse rate	
		1, 5, 10, 12, 36, 100, 200, 250, 256, 360, 400, 500, 512, 600, 800, 1000, 1024, 1200, 2000, 2048, 2500, 3600, 4096, 5000 (e.g. 100 pulses => 0100)	

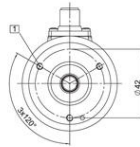
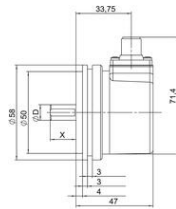
Specifications

Connection Thread	M12
-------------------	-----

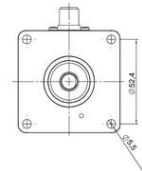
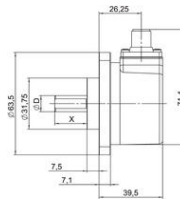
Housing diameter	58
IP Class	IP66, IP67
Mounting	Shoulder
Output	Push/Pull, RS422
Pulse Max	5000
Sensor type	Incremental
Shaft Diameter max	10
Shaft Diameter min	6
Supply Voltage DC Max	30
Supply Voltage DC Min	5
Temperature range from	-40
Temperature range to	85
Version	Multiturn



1 M3, 5.5 dJup



1 3xM4, 6 dJup



Terminal assignment

Output signal	Type of connection	M12 connector, 8 pins
2, 4, 5	Socket 4	Signal
6, 8	Socket 2	Pin

Top view of mating side, male contact base



M12 connector, 8 pins

- 40 Encoder power supply V+DC
- V+ Encoder power supply ground GND (0V)
- A, S Incremental output channel A
- B, S Incremental output channel B
- Z, S Reference signal
- PH H Plug connector housing (shield)

Terminal assignment

Output signal	Type of connection	M12 connector, 8 pins
2, 4, 5	Socket 4	Signal
6, 8	Socket 2	Pin

Top view of mating side, male contact base



M12 connector, 8 pins

- V+ Encoder power supply V+DC
- V- Encoder power supply ground GND (0V)
- A, S Incremental output channel A
- B, S Incremental output channel B
- Z, S Reference signal
- PH H Plug connector housing (shield)