

KUEBLER - MAGNET SENSOR LI20 WITH MAGNETIC RING RI20

SERIE 8.LI20

- Robust and able to withstand vibration
- Easy to install
- High resolution
- IP67. Impervious to chips, oil, water, etc.



Product description

The combination RI20/LI20 is used to measure length via a rotary shaft, e.g. in woodturning machines, materials handling, overhead cranes, etc. This sensor is more or less totally impervious to chips, oil, dust and water and thus can be used in troublesome environments, it is sealed and has no moving parts. The sensor is fitted to read on a yoke. This yoke is available for shaft dimensions 8-30 mm. There are three different yoke sizes; 31 mm, 41.2 mm and 45 mm.

The yoke RI20 has a pole distance of 2 mm. The distance between the sensor and the yoke should be 0.1 to 1.0 mm (recommended 0.4 mm). For the magnet sensor, the slope must not exceed $\pm 3^\circ$, the rotation must not exceed $\pm 3^\circ$ and the offset must not exceed ± 1 mm.

The following information is required to select the right combination:

- yoke size
- max. shaft rotation speed (given the frequency to following systems)

Pulses/revolution	Yoke	Magnet sensor	Max. revolutions (rpm)
250	RI20.031.XXXX	LI20.11X1.2005	12000
1000	RI20.031.XXXX	LI20.11X1.2020	2400
2500	RI20.031.XXXX	LI20.11X1.2050	3900
1024	RI20.041.XXXX	LI20.11X1.2016	7000
360	RI20.045.XXXX	LI20.11X1.2005	12000
3600	RI20.045.XXXX	LI20.11X1.2050	2700

Please refer to the images below for ordering information.

Order code		8.LI20 . X 1 X X . 2 XXX					
Sensor head Limes LI20		Type	a	b	c	d	e
a Model	1 = IP67, standard 2 = IP68 / IP69k and humidity tested acc. to EN 60068-3-38, EN 60068-3-78	c Type of connection	1 = cable, 2 m [6.56'] PUR A = radial cable, special length PUR *)	d Reference signal	2 = Index periodical	Stock types	
b Output circuit / power supply	1 = RS422 / 4.8 ... 26 V DC 2 = Push-pull / 4.8 ... 30 V DC	e Interpolation factor	005, 016, 020, 050			8.LI20.1111.2005 8.LI20.1111.2020 8.LI20.1111.2050 8.LI20.1121.2005 8.LI20.1121.2020 8.LI20.1121.2050	
		*) Available special lengths (connection type A): 3, 5, 8, 10, 15 m [9.84, 16.40, 26.25, 32.80, 49.21'] order code expansion .XXXX = length in dm ex.: 8.LI20.111A.2005.0030 (for cable length 3 m)					

Order code Magnetic ring RI20

8.RI20 . XXX . XXXX . 111
Type a b

Min. order quantity for non-stock types: 10 pieces

a Outer diameter

031 = 31 mm [1.22"]
041 = 41.2 mm [1.62"]
045 = 45 mm [1.77"]

b Bore diameter

0800 = 8 mm [0.32"] 1800 = 18 mm [0.71"] 0952 = 3/8"
1000 = 10 mm [0.39"] 2000 = 20 mm [0.79"] 1587 = 5/8"
1200 = 12 mm [0.47"] 2500 = 25 mm [0.98"]³⁾ 2540 = 1"³⁾
1500 = 15 mm [0.59"] 3000 = 30 mm [1.18"]³⁾

Stock types

8.RI20.031.0800.111
8.RI20.031.1000.111
8.RI20.031.1200.111
8.RI20.031.1500.111
8.RI20.041.0800.111
8.RI20.045.1200.111
8.RI20.045.1500.111
8.RI20.045.2500.111
8.RI20.045.2540.111
8.RI20.045.3000.111

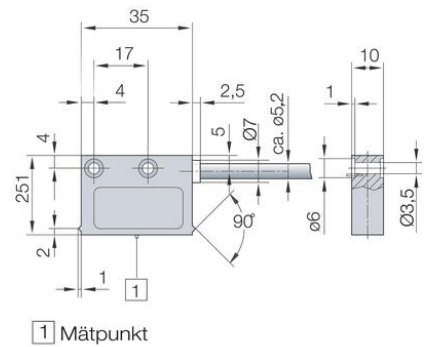
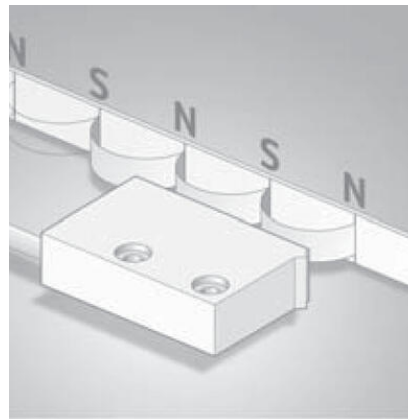
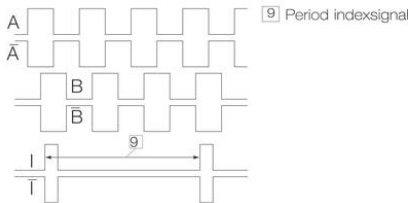
Order code	8.LI20	X1	XX	2	XXXX	111
Sensor head Limes LI20						
Model	1 = IP62 standard	2 = IP67 / IP69k and humidity tested				
Type of connection	1 = radial, 2 = 90° PCB					
Reference signal	7 = Index periodical					
Stock type	8.LI20.111.2000					
Interpolation factor	900, 910, 920, 930					
Output circuit / power supply	1 = RS422 / A, ±24 V DC 2 = Push-pull / A, ±24 V DC					

Order code	8.RI20	XXX	XXXX	111	Min. order quantity for non-stock types: 10 pieces
Magnetic ring RI20					
Outer diameter	031 = 31 mm [1.22"]	041 = 41.2 mm [1.62"]	045 = 45 mm [1.77"]		
Bore diameter	0800 = 8 mm [0.32"]	1000 = 10 mm [0.39"]	1200 = 12 mm [0.47"]	1500 = 15 mm [0.59"]	1800 = 18 mm [0.71"]
Reference signal	0952 = 3/8"	1587 = 5/8"	2540 = 1"		
Interpolation factor	900, 910, 920, 930				
Output circuit / power supply	1 = RS422 / A, ±24 V DC 2 = Push-pull / A, ±24 V DC				

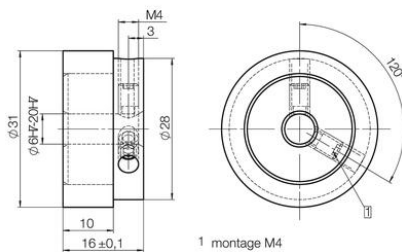
Pin assignment:

Signal	Wire colour
0 V, GND	white
U _B	brown
A	green
\bar{A}	yellow
B	grey
\bar{B}	pink
I	blue
T	red

Shield is on the housing



Magnetring 8.RI20.031.XXXX.111, ø 31 mm



1 montage M4

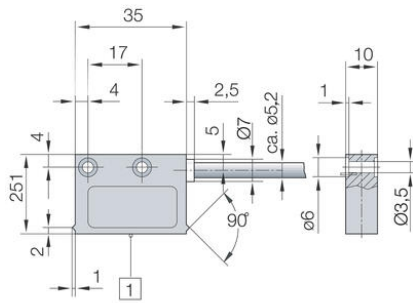
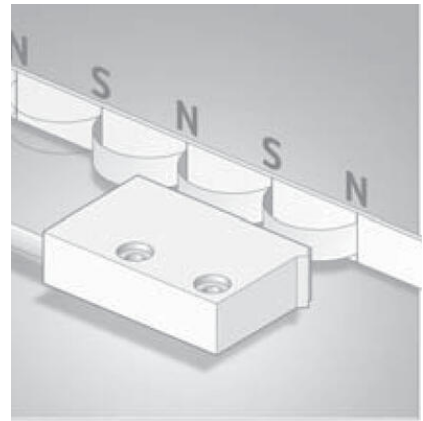
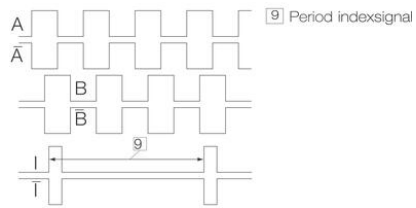
Order code	8.LI20	X1	XX	2	XXXX	111
Sensor head Limes LI20						
Model	1 = IP62 standard	2 = IP67 / IP69k and humidity tested				
Type of connection	1 = radial, 2 = 90° PCB					
Reference signal	7 = Index periodical					
Stock type	8.LI20.111.2000					
Interpolation factor	900, 910, 920, 930					
Output circuit / power supply	1 = RS422 / A, ±24 V DC 2 = Push-pull / A, ±24 V DC					

Order code	8.RI20	XXX	XXXX	111	Min. order quantity for non-stock types: 10 pieces
Magnetic ring RI20					
Outer diameter	031 = 31 mm [1.22"]	041 = 41.2 mm [1.62"]	045 = 45 mm [1.77"]		
Bore diameter	0800 = 8 mm [0.32"]	1000 = 10 mm [0.39"]	1200 = 12 mm [0.47"]	1500 = 15 mm [0.59"]	1800 = 18 mm [0.71"]
Reference signal	0952 = 3/8"	1587 = 5/8"	2540 = 1"		
Interpolation factor	900, 910, 920, 930				
Output circuit / power supply	1 = RS422 / A, ±24 V DC 2 = Push-pull / A, ±24 V DC				

Pin assignment:

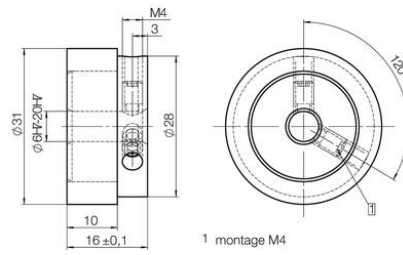
Signal	Wire colour
0 V, GND	white
U _B	brown
A	green
\bar{A}	yellow
B	grey
\bar{B}	pink
I	blue
\bar{I}	red

Shield is on the housing



1 Mätpunkt

Magnetring 8.RI20.031.XXXX.111, \varnothing 31 mm



1 montage M4