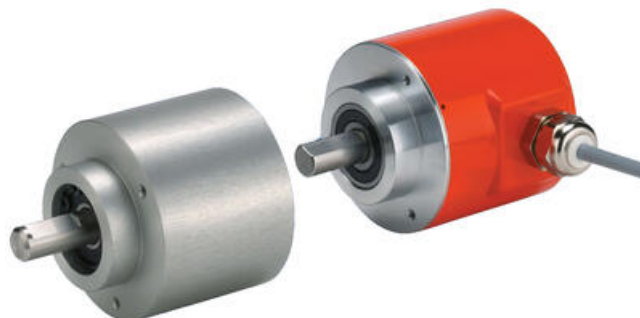


## KUEBLER - BEARING BLOCK

0010.8200.0004

Encoder acc. Bearing box shaft version

- Storage block for high-axle load applications
- For axle sensors and hole axle sensors
- Loads up to 400N



### Product description

This bearing block is used directly on a shaft or hole axle encoder to greatly increase the bearing resistance, radially 400 N, axially 200 N (a normal 58 mm angular sensor can handle approximately 80 N). This model has the same flange and fastening as a normal angle sensor, and therefore fits in the existing location with the same mounting, eg. to upgrade an existing sensor to cope with higher loads. The storage block is available in two versions:

- for axle sensors with clamping flange and 10 mm axle (ex series 5000 / 585X / 586X)

- for hollow shaft encoder with 12 mm hole diameter (ex series 5020 / 587X / 588X) The hinge shaft sensor variant gives a smaller size when the sensor itself only builds approx. 40 mm outside the block. This gives a total length that is approximately the same as a normal axis sensor.