



## Order code with encoder (analog, scalable with limit switch function)

**D8.4D1** . **XXXX** . **M1XX** . **XXXX**  
 Type                      **a**                      **b** **c** **d**                      **e**

Standard variants are represented **bold underlined**

### **a** Measuring range

0800 = 8 000 mm  
 1000 = 10 000 mm  
 1200 = 12 000 mm  
 1500 = 15 000 mm  
 2000 = 20 000 mm  
 2500 = 25 000 mm  
 3000 = 30 000 mm  
 3500 = 35 000 mm  
 4000 = 40 000 mm  
 4250 = 42 500 mm

### **b** Encoder used

**M1 = Sendix M5861, absolute <sup>1)</sup>**

### **c** Output circuit

depends on the encoder used

### **d** Type of connection

depends on the encoder used

### **e** Resolution / Protocol / Options

depends on the encoder used

### Optional on request

- Other measuring ranges
- Cable diameter 1 mm
- Eyelet or M4 wire fastening instead of wire clip
- Modified cable and/or connector orientation
- Modified cable outlet direction
- Sensor protection level IP67

## Recommended standard variants (with encoder analog, scalable with limit switch function)

Order no. draw wire encoder	Mounted encoder	Interface	Power supply	Type of connection	Resolution / Protocol	Option
D8.xD1.xxxx.M134.3512	Sendix M5861 (8.M5861.3534.3512)	Analog, 4 ... 20 mA	10 ... 30 V DC	radial M12 connector	12 Bit / 4 ... 20 mA	scalable with limit switch function <sup>2)</sup>
D8.xD1.xxxx.M144.4512	Sendix M5861 (8.M5861.3544.4512)	Analog, 0 ... 10 V	15 ... 30 V DC	radial M12 connector	12 Bit / 0 ... 10 V	scalable with limit switch function <sup>2)</sup>
D8.xD1.xxxx.M134.3612	Sendix M5861 (8.M5861.3534.3612)	Analog, 4 ... 20 mA	10 ... 30 V DC	radial M12 connector	12 Bit / 4 ... 20 mA	scalable without limit switch function <sup>2)</sup>
D8.xD1.xxxx.M144.4612	Sendix M5861 (8.M5861.3544.4612)	Analog, 0 ... 10 V	15 ... 30 V DC	radial M12 connector	12 Bit / 0 ... 10 V	scalable without limit switch function <sup>2)</sup>

## Order code with analog sensor (scaled to measuring range)

**D8.3D1** . **XXXX** . **XXX X** . **0000**  
 Type                      **a**                      **b** **c**                      **0000**

### **a** Measuring range

0800 = 8 000 mm  
 1000 = 10 000 mm  
 1500 = 15 000 mm  
 2000 = 20 000 mm  
 2500 = 25 000 mm  
 3000 = 30 000 mm  
 3500 = 35 000 mm  
 4000 = 40 000 mm

### **b** Analog sensor output / power supply

A11 = 4 ... 20 mA / 12 ... 30 V DC

A22 = 0 ... 10 V / 12 ... 30 V DC

A33 = potentiometer 1 kΩ / max. 30 V DC

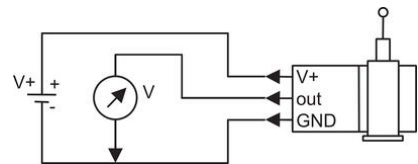
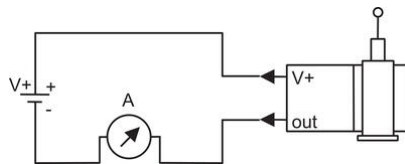
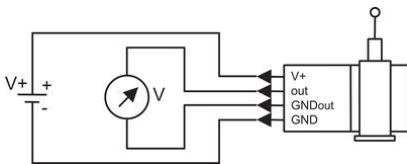
### **c** Type of connection

1 = axial cable, 2 m [6.56'] PVC

3 = axial M12 connector, 4-pin

### Optional on request

- Other measuring ranges
- Cable diameter 1 mm
- Eyelet or M4 wire fastening instead of wire clip
- Modified cable and/or connector orientation
- Modified cable outlet direction
- Sensor protection level IP67
- Improved linearity (0.02 %)
- Increased temperature range -40°C ... +85°C and -20°C ... +120°C



Pin	1	2	3	4
Cable colour	brown	white	blue	black
0 ... 10V	V+	Signal	GND	GND Sig.
4 ... 20 mA	V+	n. c.	Signal	n. c.
1 kOhm	V+	Slider	GND	n. c.

