

Order code
Hollow shaft

05.2420 . **1** **X** **X** **X** . **XXXX**
Type **a** **b** **c** **d** **e**

a Flange

1 = ø 24 mm [0.94"]

b Blind hollow shaft

(insertion depth max. 14 mm [0.55"])

1 = ø 4 mm [0.16"]

2 = ø 6 mm [0.24"]

4 = ø 1/4" ⁽¹⁾

c Output circuit / power supply

1 = push-pull (without inverted signal) / 5 ... 24 V DC

2 = push-pull (with inverted signal) / 5 ... 24 V DC

3 = push-pull (without inverted signal) / 8 ... 30 V DC

4 = push-pull (with inverted signal) / 8 ... 30 V DC

d Type of connection

1 = axial cable, 2 m [6.56'] PVC

A = axial cable, special length PVC *)

2 = radial cable, 2 m [6.56'] PVC

B = radial cable, special length PVC *)

*) Available special lengths (connection types A, B):

3, 5, 8, 10, 15 m [9.84, 16.40, 26.25, 32.80, 49.21']

order code expansion .XXXX = length in dm

ex.: 05.2420.122A.1024.0030 (for cable length 3 m)

e Pulse rate

4, 6, 8, 10, 16, 20, 25, 36, 40, 50, 60,
80, **100**, 120, 125, 180, 200, 250, 300,
360, 400, 500, **512**, **1000**, **1024**
(e.g. 360 pulses => 0360)

Stock types

05.2420.1212.0500

05.2420.1222.0500

05.2420.1222.1000

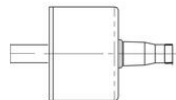
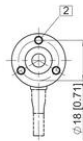
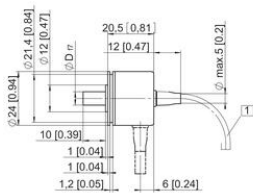
05.2420.1222.1024

Optional on request

- other pulse rates

Specifications

Housing diameter	24
IP Class	IP50
Pulse Max	5000
Resolution	50 pulses/turn
Shaft Diameter	4
Supply Voltage DC Max	30
Supply Voltage DC Min	5
Temperature range from	-20
Temperature range to	85



+UB manöverspänning
0V manöverspänning
Kanals A
(Kanals A)
Kanals B
(Kanals B)
Kanals D
(Kanals D)

Var noga med att ALLTID isolera
omvända kablar innan givaren
spänns på.