

ASCO - 215 SERIES DIRECT OPERATED

2/2

SCE215C010
Solenoid valve 2/2 NC 3/8" 230/50

- Normally closed
- Working pressure 0 bar to 3.5 bar
- Housing in aluminium

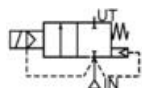


Product description

Differential pressure	0-3.5 bar
Max. allowed pressure	10 bar
Response time	25-120 ms
Media	Air and gas
Media temperature	-20 °C to +85 °C NBR (nitrile)
Ambient temperature	-20 °C to +75 °C
IP-class	IP65
Standard voltages	DC (=) 24 V AC (~) 24 V-115 V-230 V/50 Hz
Connection	DIN 43650/A
Design	
Valve body	Aluminium
Core tube	Stainless 305SS
Core	Stainless 430FSS
Spring	Stainless 302SS
Seals	NBR
Diaphragm	Fibreglass-reinforced NBR
Seat	Aluminium or stainless 304SS

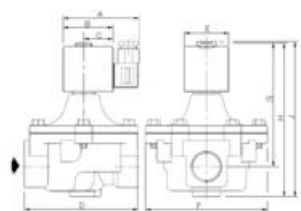
Core control	CA (acetal)
Slide ring	PTFE
Shading ring	Copper
Coil	Epoxy
Special seals	EPM, EPDM

NC



Dimensions

Fig. 1



Valve	A	B	C	D	E	F	G	H	J	Weight (kg)
SCE215C010	80	50	30	70	45	60	88	102	119	0.6
SCE215C020	80	50	30	70	45	60	88	102	130	0.6
SCE210C030	80	50	30	84	45	60	93	113	130	0.7
SCE215B050	86	56	33	127	50	137	140	172	172	1.5
SCE215B060	86	56	33	127	50	137	140	172	172	1.5
SCE215B070	86	56	33	127	50	137	140	172	172	1.5
SCE215B080	86	56	33	155	50	160	149	188	188	2.1

Order number

Item no.	Connection	Orifice	Flow factor Kv		Differential pressure bar				Power W	
			m ³ /h	l/min.	air/gas		air/gas			
	Rp	mm			min.	~	=	~	=	
SCE215C010	3/8	19	2.9	48.3	0	3.50	1.8	10.5	11.2	
SCE215C020	1/2	19	3.8	63.3	0	3.50	1.8	10.5	11.2	
SCE215C030	3/4	19	4.4	73.3	0	3.50	1.8	10.5	11.2	
SCE215B050	1	41	18.0	300.0	0	1.80	-	15.4	-	
SCE215B060	1 1/4	41	27.0	450.0	0	1.80	-	15.4	-	
SCE215B070	1 1/2	41	30.0	500.0	0	1.80	-	15.4	-	

SCE215B080	2	53	50.0	833.0	0	1.80	-	15.4	-
------------	---	----	------	-------	---	------	---	------	---

Repair kits and coils

Item number						
Valve	Repair kit AC	Repair kit DC	24 V DC	24 V AC	115 V AC	230 V AC
SCE215C010	C302350	C302430	400425142	400425101	400425118	400425117
SCE215C020	C302350	C302430	400425142	400425101	400425118	400425117
SCE215C030	C302350	C302430	400425142	400425101	400425118	400425117
SCE215B050	C302352	-	-	400525101	400525118	400525117
SCE215B060	C302352	-	-	400525101	400525118	400525117
SCE215B070	C302352	-	-	400525101	400525118	400525117
SCE215B080	C302353	-	-	400525101	400525118	400525117

Special versions

- NC valves up to 3"
- NO open valves 3/8-3"
- Explosion-proof version

Accessories

- Cable connector - C18209N21
- Mounting clamp - C038713MB

Specifications

Coil Material	Epoxy
Connection Thread	3/8 BSP
Differential Pressure Air Max	3,5
Differential Pressure Max	3,5
Differential Pressure Min	0
Flow Factor / Flow Coefficient	2,9
Flow Max l/min Double	48,3
Function 1	2/2
Function 2	Normally Closed (SPST)
IP Class	IP65
Material Body	Aluminium
Material of seals	NBR
Material Plunger	Stainless steel
Material Short Call	Copper

Material Slide Ring	PTFE
Materials Seat	Aluminium
Materials Spring	Stainless steel
Power Consumption	10,5
Temperature range from	-20
Temperature range of media from	-20
Temperature range of media to	85
Temperature range to	75
Throughput	19
Type of valve	Solenoid valve
Weight	0,6
Voltage AC	230

