



KUBLER SLIP RING SR060E

SR060E-25-2-3-132
SLIP RING 2 SIGNAL / 3 POWER 25MM SHAFT

- Standard slipring
- Life span 50 million revolutions
- Easily accessible contacts
- IP64



Product description

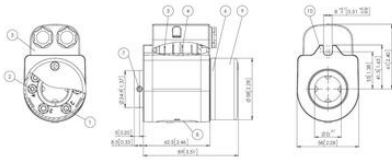
SR060E is a compact slip ring for up to 3 power and 2 data transmissions from a stationary to a rotating platform. The power and data transmission takes place securely via trailer contacts.

New innovative contact materials have a long service life and extremely little maintenance during operation. The round shape with smooth surfaces and a high level of protection allow easy cleaning.

Examples of applications: packaging machines, textile machines, robots and handling equipment, rotating tables, etc.

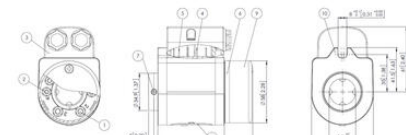
Specifications

Contact Resistance Channel	1
Contact Resistance Data Channel	0,1
Dielectric Strength	1000
Hollow Shaft Diameter Max	25
Insulation Resistance	10 ³ Ohm(500VDC)
IP Class	IP64
Life span	500000000
Power Load Max	16
Signal load	2
Speed max	500
Temperature range from	0
Temperature range to	75
Voltage Input max	240



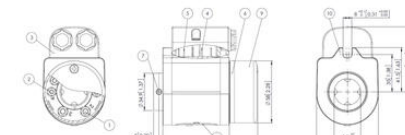
- 1 - Screw terminal MB for load transmission
- 2 - Screw terminal MB for signal transmission
- 3 - Protective cover for the stator connections with screened assembly (only IP66)
- 4 - Flat pin connection for load transmission
- 5 - Flat pin connection for signal transmission
- 6 - Rotating connection ring
- 7 - 4 x socket set screw DIN 913 M6
- 8 - Maintenance window
- 9 - Protective cover for connections
- 10 - Torque stop

Dimensions
(Dimensions in mm (inch))



- 1 - Screw terminal MB for power transmission
- 2 - Screw terminal MB for signal transmission
- 3 - Protective cover for the stator connections with screened assembly (only IP66)
- 4 - Flat pin connection for power transmission
- 5 - Flat pin connection for signal transmission
- 6 - Rotating connection ring
- 7 - 4 x socket set screw DIN 913 M6
- 8 - Maintenance window
- 9 - Protective cover for connections
- 10 - Torque stop

Dimensions
(Dimensions in mm (inch))



- 1 - Screw terminal MB for power transmission
- 2 - Screw terminal MB for signal transmission
- 3 - Protective cover for the stator connections with screened assembly (only IP66)
- 4 - Flat pin connection for power transmission
- 5 - Flat pin connection for signal transmission
- 6 - Rotating connection ring
- 7 - 4 x socket set screw DIN 913 M6
- 8 - Maintenance window
- 9 - Protective cover for connections
- 10 - Torque stop