

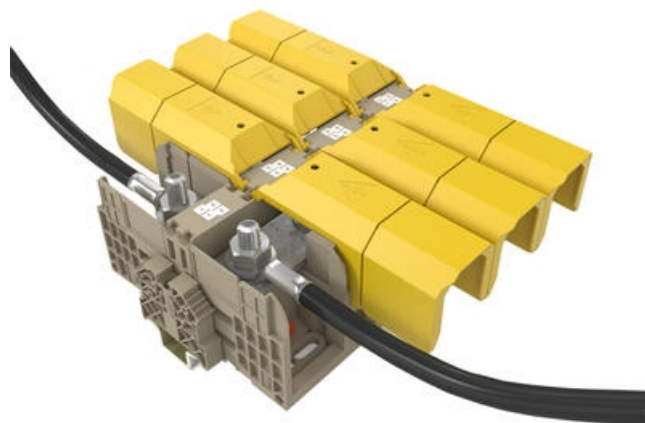
## HIGH-POWER STUD TERMINALS - HSKG 35-300MM<sup>2</sup>

HSKG

17170.2

Terminal Block HSKG 35sq Double Stud 6mm

- Dual stud connection
- Direct & TS35 mount
- IP20 with Gull Wing Covers fitted
- Material polyamide 6.6
- Fire-resistance class V0



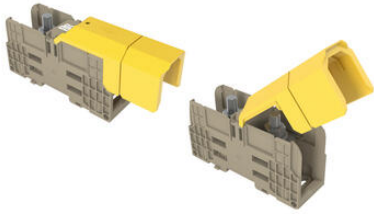
### Product description

The wire connection range is from 2.5 mm<sup>2</sup> to 300 mm<sup>2</sup>. and crimped lugs are used to fit the cables to the busbar using the hexagonal nut with built in washer. When used together with the ADH hinged covers, the HSKG stud terminals provide outstanding finger and touch protection. The ADH cover is easy to mount; it simply snaps into the side walls of the stud terminals as it is closed. In this quick and reliable way, touch-safe protection of the terminal points is always guaranteed.

### Specifications

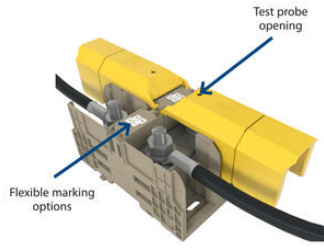
<b>Approvals</b>	UL, CSA, CSA US, cUL, KEMA KUR
<b>Color</b>	Beige
<b>Connections</b>	2
<b>Contact clamping area</b>	≤ 50 mm <sup>2</sup>
<b>Contamination degree</b>	3
<b>Country of origin</b>	DE
<b>Cross-Section</b>	35
<b>CSA test standard</b>	C22.2 No 158
<b>CSAus test standard</b>	UL 1059
<b>cUL test standard</b>	C22.2 No 158
<b>DIN 46234 / 1 cable lug per side, max.</b>	50
<b>DIN 46234 / 1 cable lug per side, min.</b>	2,5
<b>DIN 46235: 1 cable lug per side, max.</b>	25

<b>DIN 46235: 1 cable lug per side, min.</b>	6
<b>Flamklass</b>	UL94-V0
<b>Height TS 35/7.5</b>	51
<b>Height with TW/ADH</b>	60
<b>Insulation Material</b>	Polyamide 6.6
<b>KEMA KEUR test standard</b>	EN 60947-7-1:2028
<b>Length</b>	107
<b>Length with TW/ADH</b>	131
<b>Mounting</b>	TS 35
<b>Number of levels</b>	1
<b>Operating temperature from</b>	-40
<b>Operating temperature to</b>	120
<b>Overvoltage category</b>	III
<b>Pack Size</b>	10
<b>Rated Current CSA</b>	130
<b>Rated current CSAus</b>	130
<b>Rated current cUL</b>	130
<b>Rated Current IEC</b>	125
<b>Rated impulse voltage</b>	8
<b>Rated wire cross section from (AWG)</b>	14
<b>Rated wire cross section to (AWG)</b>	1/0
<b>Rated voltage CSAus</b>	1000
<b>Rated voltage cUL</b>	1000
<b>Rated Voltage IEC</b>	1000
<b>Rated Voltage To UL</b>	1000
<b>Stud size</b>	M 6
<b>Tariff code</b>	85369010
<b>Torque max</b>	6
<b>Torque Min</b>	3
<b>UL test standard</b>	UL 1059
<b>Weight</b>	88,6
<b>Width</b>	27
<b>Voltage CSA</b>	1000

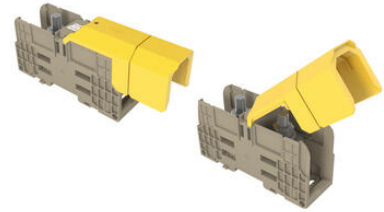
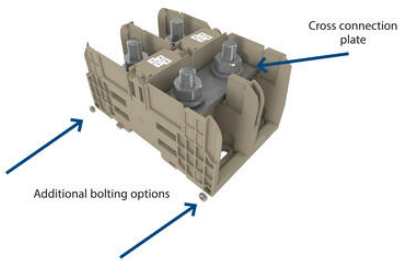


**Using the ADH covers**

Individual ADH... covers are available for each width of stud terminal. They are designed for the different sizes and the corresponding clearance and creepage distances. It is also possible to shorten the covers along pre-created breakage points. The ADH cover is attached by pressing the cover down onto the base terminal so that the cover snaps onto the terminal.

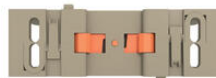
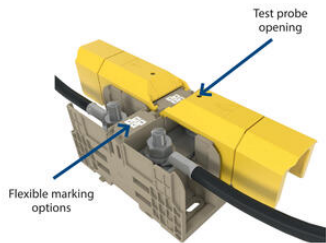


TS mount / direct mount



**Using the ADH covers**

Individual ADH... covers are available for each width of stud terminal. They are designed for the different sizes and the corresponding clearance and creepage distances. It is also possible to shorten the covers along pre-created breakage points. The ADH cover is attached by pressing the cover down onto the base terminal so that the cover snaps onto the terminal.



TS mount / direct mount

