

**KUEBLER - ABSOLUTE-CODED
ANGULAR TRANSMITTER SENDIX F5868
/ F5888, OPTICAL, MODBUS, Ø58 MM
SERIE F5868 MODBUS**

- Housing diameter Ø58 mm
- Modbus - Interface
- 16 + 16 bit resolution
- -40 to +85 ° C working temperature



Product description

Sendix F5868 / F5888 is a series of multivalved optical axes and hole axes with Modbus interface and a resolution of up to 32 bits (16 bit multi-color + 16-bit one-turn).

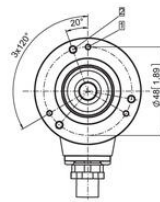
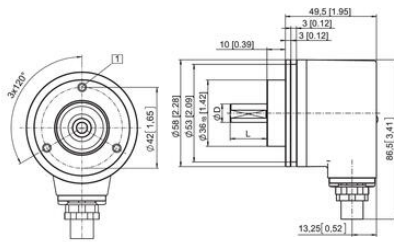
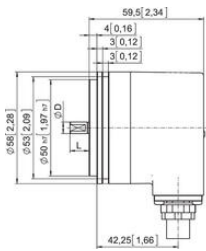
The sensor also has high enclosure class, shock resistance and a wide temperature range. The F5868 / F5888 is therefore very suitable for applications where extreme environments or temperatures may occur, such as mobile applications.

Please refer to the image below for ordering information.

Order code	8.F5868 . XX6E . 61 1 2					
Shaft version	Type	a	b	c	d	e
a Flange						
1 = clamping flange, IP65 ø 58 mm [2.28"]						
3 = clamping flange, IP67 ø 58 mm [2.28"]						
2 = synchro flange, IP65 ø 58 mm [2.28"]						
4 = synchro flange, IP67 ø 58 mm [2.28"]						
b Shaft (ø x L), with flat						
1 = 6 x 10 mm [0.24 x 0.39"]						
2 = 10 x 20 mm [0.39 x 0.79"]						
3 = 1/4" x 7/8"						
4 = 3/8" x 7/8"						
c Interface / power supply						
6 = Modbus RTU, 10 ... 30 V DC						
d Type of connection						
E = 1 x radial M12 connector, 5-pin						
e Fieldbus profile						
61 = Modbus RTU Application Protocol V1.1b3						
						Optional on request
						- Ex 2/22
						- surface protection salt spray tested

Order code	8.F5888 . XX6E . 61 1 2					
Hollow shaft	Type	a	b	c	d	e
a Flange						
1 = with spring element, long, IP65						
2 = with spring element, long, IP67						
3 = with stator coupling, IP65 ø 65 mm [2.56"]						
4 = with stator coupling, IP67 ø 65 mm [2.56"]						
5 = with stator coupling, IP65 ø 63 mm [2.48"]						
6 = with stator coupling, IP67 ø 63 mm [2.48"]						
b Through hollow shaft						
3 = ø 10 mm [0.39"]						
4 = ø 12 mm [0.47"]						
5 = ø 14 mm [0.55"]						
6 = ø 15 mm [0.59"]						
c Interface / power supply						
6 = Modbus RTU, 10 ... 30 V DC						
d Type of connection						
E = 1 x radial M12 connector, 5-pin						
e Fieldbus profile						
61 = Modbus RTU Application Protocol V1.1b3						
						Optional on request
						- Ex 2/22
						- surface protection salt spray tested

Connection Thread	M12
Housing diametre	58
IP Class	IP65, IP67
Mounting	Shoulder
Output	Modbus
Resolution Envarv	16 bit
Resolution More Yards	16 bit
Sensor type	Absolute
Shaft Diameter max	10
Shaft Diameter min	6
Supply Voltage DC Max	30
Supply Voltage DC Min	10
Temperature range from	-40
Temperature range to	85
Version	Multiturn



Interface	Type of connector	1 x M12 connector						
6	6 Bul in	Signal	D-V power supply	+V power supply	D0	D1	TG	
		Pfc	3	2	5	4	1	

Interface	Type of connector	1 x M12 connector						
6	6 Bul in	Signal	D-V power supply	+V power supply	D0	D1	TG	
		Pfc	3	2	5	4	1	