

**KUEBLER - ABSOLUTE-CODED  
ANGULAR TRANSMITTER SENDIX F5868  
/ F5888, OPTICAL, MODBUS, Ø58 MM**  
SERIE F5868 MODBUS

- Housing diameter Ø58 mm
- Modbus - Interface
- 16 + 16 bit resolution
- -40 to +85 ° C working temperature



**Product description**

Sendix F5868 / F5888 is a series of multivalved optical axes and hole axes with Modbus interface and a resolution of up to 32 bits (16 bit multi-color + 16-bit one-turn).

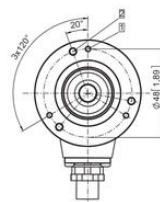
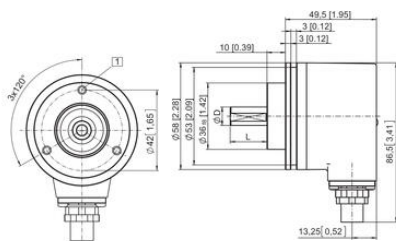
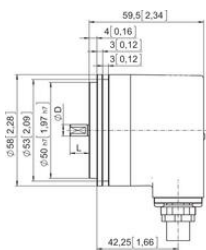
The sensor also has high enclosure class, shock resistance and a wide temperature range. The F5868 / F5888 is therefore very suitable for applications where extreme environments or temperatures may occur, such as mobile applications.

Please refer to the image below for ordering information.

Order code	8.F5868 . XX6E . 61 1 2					
Shaft version	Type	a	b	c	d	e
<b>a</b> Flange						
1 = clamping flange, IP65 ø 58 mm [2.28"]						
3 = clamping flange, IP67 ø 58 mm [2.28"]						
2 = synchro flange, IP65 ø 58 mm [2.28"]						
4 = synchro flange, IP67 ø 58 mm [2.28"]						
<b>b</b> Shaft (ø x L), with flat						
1 = 6 x 10 mm [0.24 x 0.39"]						
2 = 10 x 20 mm [0.39 x 0.79"]						
3 = 1/4" x 7/8"						
4 = 3/8" x 7/8"						
<b>c</b> Interface / power supply						
6 = Modbus RTU, 10 ... 30 V DC						
<b>d</b> Type of connection						
E = 1 x radial M12 connector, 5-pin						
<b>e</b> Fieldbus profile						
61 = Modbus RTU Application Protocol V1.1b3						
						Optional on request
						- Ex 2/22
						- surface protection salt spray tested

Order code	8.F5888 . XX6E . 61 1 2					
Hollow shaft	Type	a	b	c	d	e
<b>a</b> Flange						
1 = with spring element, long, IP65						
2 = with spring element, long, IP67						
3 = with stator coupling, IP65 ø 65 mm [2.56"]						
4 = with stator coupling, IP67 ø 65 mm [2.56"]						
5 = with stator coupling, IP65 ø 63 mm [2.48"]						
6 = with stator coupling, IP67 ø 63 mm [2.48"]						
<b>b</b> Through hollow shaft						
3 = ø 10 mm [0.39"]						
4 = ø 12 mm [0.47"]						
5 = ø 14 mm [0.55"]						
6 = ø 15 mm [0.59"]						
<b>c</b> Interface / power supply						
6 = Modbus RTU, 10 ... 30 V DC						
<b>d</b> Type of connection						
E = 1 x radial M12 connector, 5-pin						
<b>e</b> Fieldbus profile						
61 = Modbus RTU Application Protocol V1.1b3						
						Optional on request
						- Ex 2/22
						- surface protection salt spray tested

<b>Housing diametre</b>	58
<b>IP Class</b>	IP65, IP67
<b>Resolution Envarv</b>	16 bit
<b>Resolution More Yards</b>	16 bit
<b>Shaft Diameter max</b>	10
<b>Shaft Diameter min</b>	6
<b>Supply Voltage DC Max</b>	30
<b>Supply Voltage DC Min</b>	10
<b>Temperature range from</b>	-40
<b>Temperature range to</b>	85



Interface	Type of connector	1 x M12 connector						
6	6 Pin in	Signal	D+ power supply	-V power supply	D0	D1	TG	
		PVc	3	2	5	4	1	