

KUEBLER - ABSOLUTE-CODED ANGULAR TRANSMITTER SENDIX 5868/5888, OPTICAL, ETHERCAT, Ø58 MM

SERIE 5868 ETHERCAT



- Housing diameter Ø58 mm
- EtherCAT
- Safety-Lock™
- High enclosure class

Product description

Sendix 5868/5888 is a multifarious sensor with EtherCAT in robust design. Thanks to the construction of Safety-Lock™ as well as the fully cast housing, the sensor is able to handle even the more demanding applications where there are high demands on the sensor. The wide temperature range combined with the high enclosure class allows the sensor to be used both outdoors and in applications where large temperature changes occur

Please refer to the image below for ordering information.

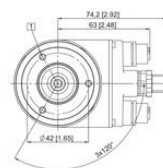
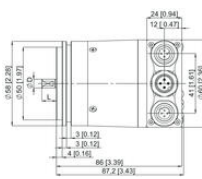
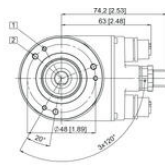
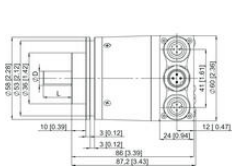
Order code	8.5868	.XXB2	.B212
Shaft version	Type	a b c d	e
a Flange		b Shaft (ø x L), with flat	c Interface / power supply
1 = clamping flange, IP65 ø 58 mm [2.28"]		1 = 6 x 10 mm [0.24 x 0.39"] ¹⁾	B = EtherCAT / 10 ... 30 V DC
3 = clamping flange, IP67 ø 58 mm [2.28"]		2 = 10 x 20 mm [0.39 x 0.79"] ²⁾	
2 = synchro flange, IP65 ø 58 mm [2.28"]		3 = 1/4" x 7/8"	d Type of connection
4 = synchro flange, IP67 ø 58 mm [2.28"]		4 = 3/8" x 7/8"	removable bus terminal cover
5 = square flange, IP65 □ 63.5 mm [2.5"]			2 = 3 x M12 connector, 4-pin
7 = square flange, IP67 □ 63.5 mm [2.5"]			e Fieldbus profile
			B2 = EtherCAT with CoE (CAN over EtherNet)
			Optional on request
			- Ex 2/22
			- surface protection salt spray tested

Order code	8.5888	.XXB2	.B212
Hollow shaft	Type	a b c d	e
a Flange		b Blind hollow shaft	c Interface / power supply
1 = with spring element, long, IP65		(insertion depth max. 30 mm [1.18"])	B = EtherCAT / 10 ... 30 V DC
2 = with spring element, long, IP67		3 = ø 10 mm [0.39"]	
3 = with stator coupling, IP65 ø 65 mm [2.56"]		4 = ø 12 mm [0.47"]	d Type of connection
4 = with stator coupling, IP67 ø 65 mm [2.56"]		5 = ø 14 mm [0.55"]	removable bus terminal cover
5 = with stator coupling, IP65 ø 63 mm [2.48"]		6 = ø 15 mm [0.59"]	2 = 3 x M12 connector, 4-pin
6 = with stator coupling, IP67 ø 63 mm [2.48"]		8 = ø 3/8"	e Fieldbus profile
		9 = ø 1/2"	B2 = EtherCAT with CoE (CAN over EtherNet)
			Optional on request
			- Ex 2/22
			- surface protection salt spray tested

Specifications

Housing diameter	58
IP Class	IP65, IP67
Resolution Envarv	16 bit (default: 13 bit)

Resolution More Yards	Max. 12 bit
Resolution Overall	28 bit (default: 25 bit)
Shaft Diameter max	10
Shaft Diameter min	6
Supply Voltage DC Max	30
Supply Voltage DC Min	10
Temperature range from	-40
Temperature range to	80



Interface	Type of connection	Function	M12 connector				Pin	
B	2	Bus Port IN	Signal:	Transmit data	Receive data	Transmit data	Receive data	1 2
		Abbreviations	TxD+	RxD+	TxD-	RxD-	4 3	
	3 x M12 connector	Power	Signal:	Voltage +	-	Voltage -	-	4 3
		Abbreviations	+V	-	GND	-	4 3	
	3 x M12 connector	Bus Port OUT	Signal:	Transmit data	Receive data	Transmit data	Receive data	1 2
		Abbreviations	TxD+	RxD+	TxD-	RxD-	4 3	