

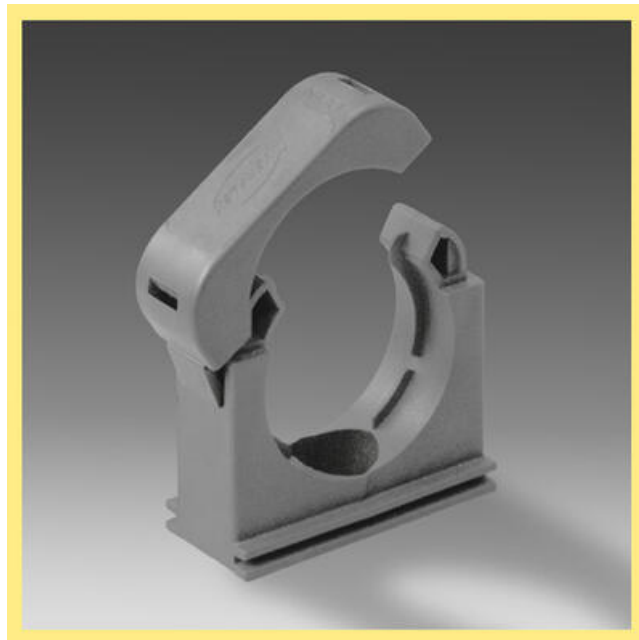


FLEXIBLE CONDUITS FLEXIBLE CONDUIT BRACKETS

SWL10N

Conduit Support With Lid Size 10 Black

- Free of halogens, phosphorus and cadmium.
- Self-extinguishing.
- Shock resistant
- With base for its fixation to RWL support guides.
- Temperature range: from -40°C up to +105°C (150°C short term).



Product description

Incorporated conduit entry guide to make the conduit installation easier and to secure it when a tensile strength is applied.